

TARTAN 27



27' SPARKMAN & STEPHENS designed fiberglass racing/cruising auxiliary.

DOUGLASS & McLEOD, Inc.

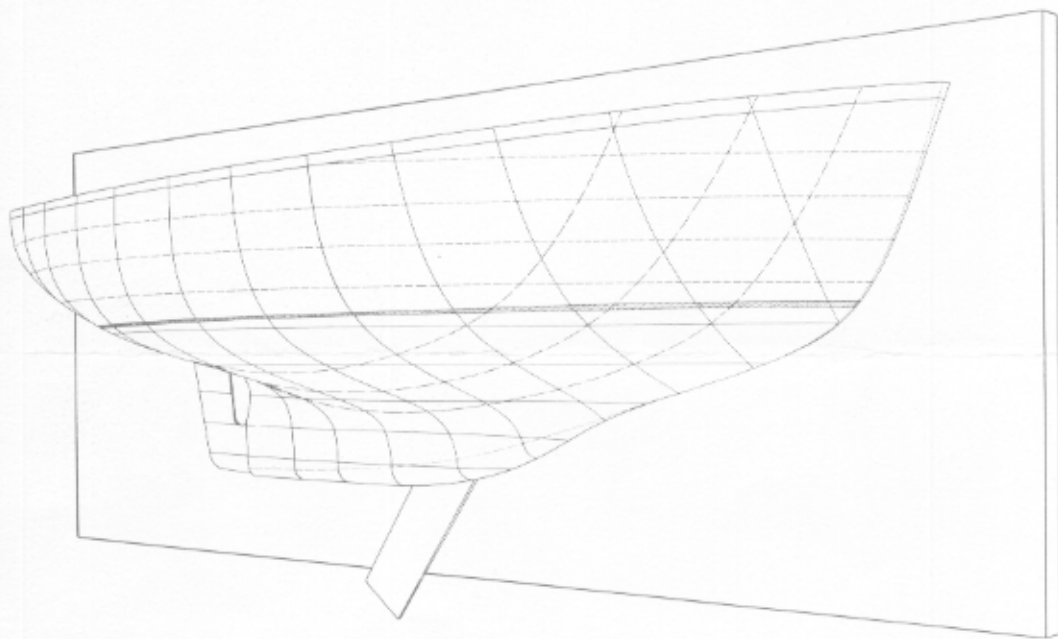
TARTAN 27 -- PERFORMANCE • CRAFTSMANSHIP • QUALITY

TARTAN 27 — conceived, designed and built as a boat to be owned with pride and enjoyed to the ultimate.

PERFORMANCE — like the countless other renowned boats of **Sparkman & Stephens** design thoroughbred performance is yours when racing. She was designed to give utmost performance and from the very first race entered has demonstrated her ability. Similarly when cruising, your every reasonable expectation is met. The arrangement plan below decks with its separate forward cabin, the completely private, fully enclosed head, the unique dinette arrangement and complete galley facilities illustrate the thought which has gone into these details.

CRAFTSMANSHIP — “**Douglass and McLeod built**” has long been synonymous with craftsmanship. The hundreds of Thistle and Highlander class boats bespeak this fact. The same top quality craftsmanship is yours in the TARTAN 27. She is built by yachtsmen for yachtsmen in the best American tradition.

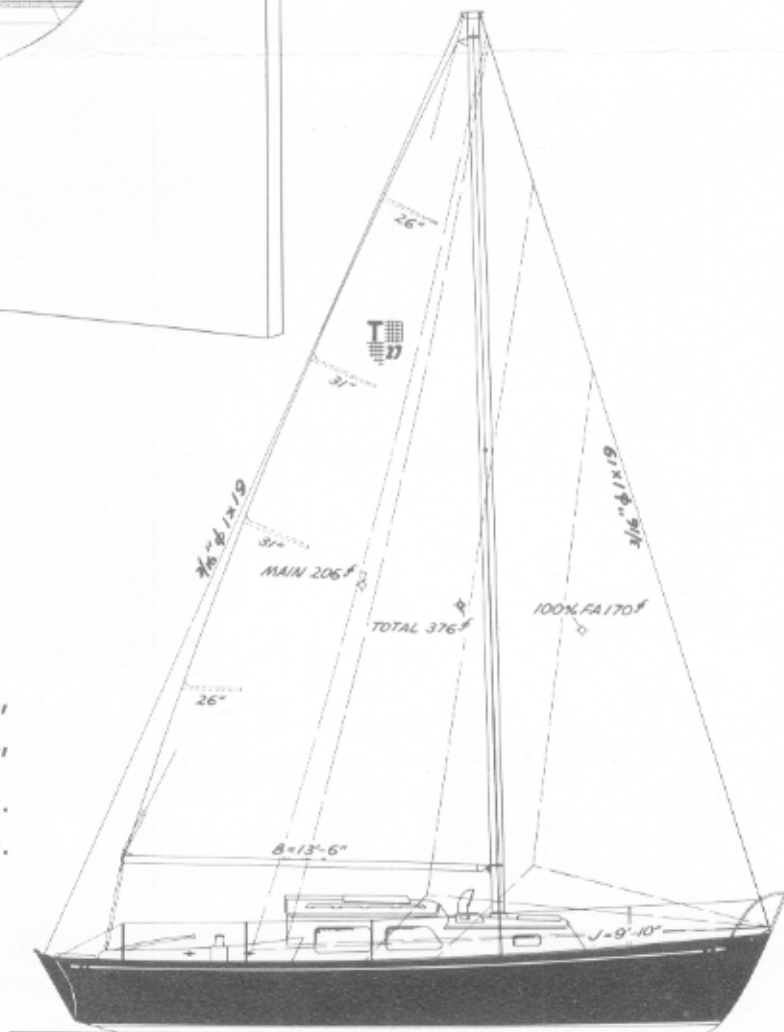
QUALITY — the hull is molded to meet or exceed industry standards. Other of the many quality features of this boat, which you will note in the specifications, include extruded aluminum spars, stainless steel standing rigging



Note the easy flow of entry, the firm bilges and the sharp sections forward — all features contributing to TARTAN 27's outstanding performance ability and record.

TARTAN 27 may be had sloop or yawl rigged. The modern masthead rig permits carrying the generous sized headsails so desirable in racing. The yawl provides for an easy rig to sail, when cruising short handed.

LOA 27' 0"	DRAFT (board up) . . 3' 2"
LWL 21' 5"	DRAFT (board down) 6' 4"
BEAM 8' 7 1/2"	S/A SLOOP 372 ft.
DISPLACEMENT 6500 lbs.	S/A YAWL 394 ft.



QUALITY • APPEARANCE • EASY MAINTENANCE



with swaged ends, dacron running rigging, hardware and fittings of the highest quality, reliable Universal auxiliary power, a Monel fuel tank, ample winches for easy handling, roller reefing for convenience. Indeed, here is a boat not built to a price, but one with the quality features necessary to years of happy and satisfied ownership.

APPEARANCE — mindful that appearance is significant to the discriminating boat owner, much planning went into this aspect of the TARTAN 27. Her lines are modern, but keep enough of the traditional to please the vast majority of true yachtsmen. Sufficient wood trim has been retained to give the beauty and warmth not possible to have in an all fiberglass boat. Extensive Philippine mahogany joiner work below decks too is in keeping with a custom quality yacht — one which the owner can show off with pride as well as enjoy and live aboard with comfort.

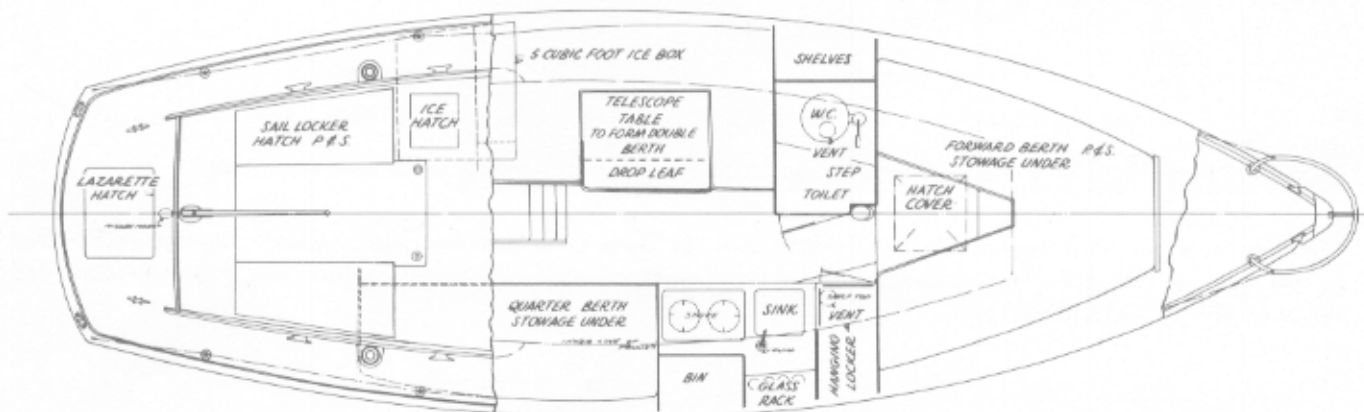
EASY MAINTENANCE — believing that boats are owned to be enjoyed, the TARTAN 27 is of proven fiberglass construction. The limited maintenance is well within the limits of what the majority of boat owners can and like to do. Yard bills are kept to a bare minimum. And gone are the days of leaks and rot — here are the days of carefree, trouble free pleasure.



Looking aft in the main cabin one sees the quarter berth on the starboard side, the fully enclosed motor compartment with its easy access, a corner of the dinette above which shows the interior access door to the food storage compartment of the ice box.



The main cabin looking forward with the dinette (converts to a double berth) to port. Forward of this is the fully enclosed head (with a door — not a curtain). To the right is the complete galley with some of its adequate stowage areas. Next to the galley is the full length hanging locker. Beyond the head and locker are the two V berths of the forward cabin and on beyond the chain locker.



Note the lazarette hatch for access to a generous sized stowage space, the convenient sail lockers under the cockpit seats, the deck filling ice hatch to end the needless drippings of melting ice below. Other features are the unique dinette which can be converted to a double berth, facilities to comfortably sleep 5 without crowding due to the extra space obtained with fiberglass construction, the ample and convenient galley facilities, the enclosed head, and the generous hanging and stowage areas.

Specifications

HULL, DECK & CABIN TRUNK — fiberglass, mechanically and chemically bonded into an integral unit.
Colors — owner's option.

BALLAST — 2000# lead outside.

CENTERBOARD — molded fiberglass airfoil section — weighted.

RUDDER — fabricated corrosion resistant aluminum.

SPARS — extruded aluminum mast and boom.

RIGGING — stainless steel to swaged fittings.

POWER — 30 hp. Universal Atomic 4.

SAILS — main and working jib of dacron by Ratsey & Laphorn.

EXTERIOR TRIM — cockpit coaming, hatches, cap rail, hand rail and miscellaneous pieces — teak.

ELECTRICAL SYSTEM — 12 Volt.

LIGHTS — 4 cabin; all required running lights.

TANKS — 21 gallon Monel fuel; 30 gallon stainless steel water.

INTERIOR TRIM & FINISH — varnished Philippine mahogany.

DINETTE — drop leaf table, area converts to double berth.

BERTHS — 5 - 2 single forward, 1 quarter berth, dinette converts to double berth.

GALLEY — sink, pump, sliding stove, ample stowage.

HEAD — enclosed with door.

HEADROOM — 6' main cabin.

ICE BOX — 150# capacity, deck filled; separate food compartment, stainless steel lined; drains overboard.

VENTILATION — 2 Dorade type vents; 2 opening portlights.

Equipment

Running rigging — stainless and dacron.

Winches — jib halyard, 2 - #3 genoa sheet, and main halyard winch.

Genoa group — 2 each - 6' tracks, adjustable slides, opening snatch blocks with dacron sheets.

Roller reefing — enclosed worm gear with boom end swivel.

2 Dorade type vents.

Anchor — Danforth with 25 fathoms of nylon rode.

Bell.

Fog horn.

Fire extinguishers — 2 - 2 1/2 # dry chemical.

Compass — 3" gimballed Corsair.

Bronze hardware — satin finished chrome plated.

Plastic covered life lines.

Stainless steel pulpit.

Cockpit cushions — Naugahyde covered polyfoam.

Masthead flag halyard.

Instrument panel.

12 Volt battery.

Galley pump.

Galley stove — 2 burner alcohol pressure.

Toilet.

4 USCG approved life vests.

Berth mattresses — 4" Polyfoam.

Sailcloth or vinyl berth mattress covers.

TARTAN 27 is not a stripped down boat. Note how the base price includes most commonly desired items. You do not have a long list of equipment, optional equipment or other accessories to buy which so commonly add tremendously to quoted base prices.



DOUGLASS & McLEOD, Inc.

P. O. Box 311R • PAINESVILLE, OHIO • Phone 352-6156